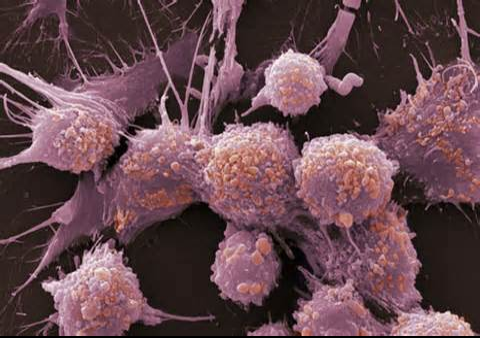
A microscopic image showing a dense cluster of cancer cells. The cells are irregular in shape, with prominent nuclei and some showing signs of necrosis or apoptosis. The overall appearance is that of a highly proliferative and invasive tumor mass.

# The Cancerous Nature of Sin

## A Lesson From the Life of David



# The Diagnosis

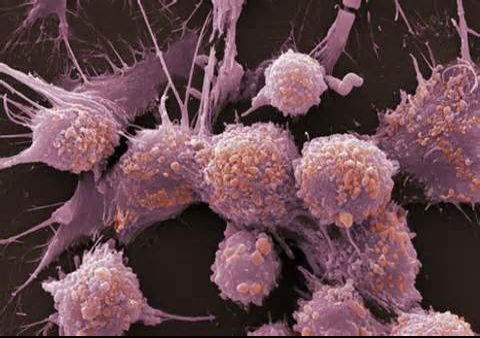
- We are all sinners
  - Romans 3:23; 1 John 1:7-10

## Causes

- Desires
  - James 1:14-15
- Bad influences
  - 1 Corinthians 15:33

## Prevention

- Develop self-control
  - 1 Corinthians 9:24-27
- Avoid them
  - James 4:4
  - 2 Corinthians 6:14-18



# The Devastation

David sleeps with  
Bathsheba

Amnon rapes  
Tamar

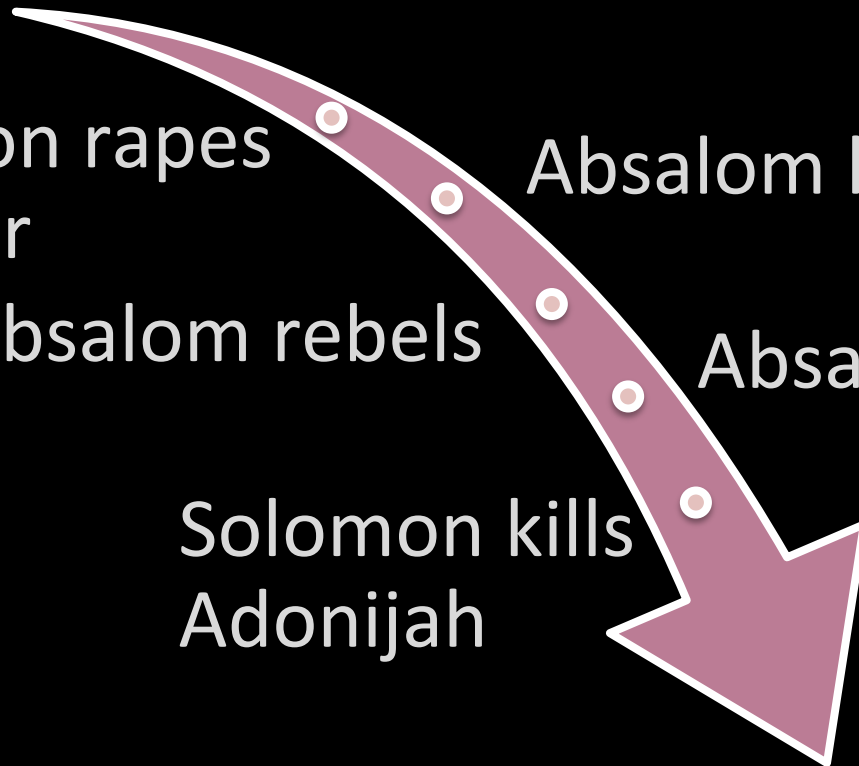
Absalom rebels

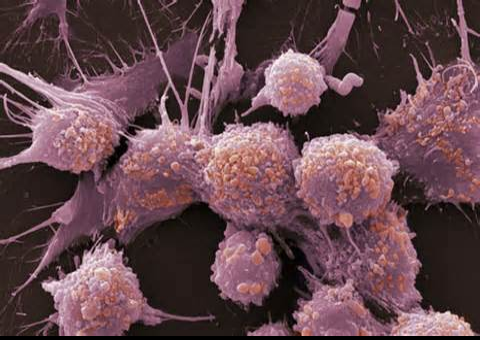
Solomon kills  
Adonijah

Absalom kills Amnon

Absalom is killed

The Kingdom splits





# The Desperation

- We have a desperate need
  - Romans 3:23; 6:23
- Christ is the cure
  - I John 2:2
  - Romans 6:3-12
  - John 3:16